

CYNGOR SIR POWYS COUNTY COUNCIL.

CABINET EXECUTIVE

26 July 2016

**REPORT AUTHOR: County Councillor Graham Brown
Portfolio Holder for Children's Services**

**County Councillor Stephen Hayes
Portfolio Holder for Adult's Services**

**SUBJECT: Powys Safeguarding Children and Adults
Quarterly update**

REPORT FOR: Information

Summary

The purpose of this report is to provide Cabinet with an update in respect of safeguarding children and adults in Powys. This report combines both adults and children's safeguarding information.

Proposal

To receive the report and note the updates from the report received by Cabinet in March 2016.

Update in relation to an integrated Safeguarding team (adults).

The Safeguarding Lead manager for adults has now commenced her post and is prioritising working on ensuring processes are in place to ensure that Powys County Council is compliant with the legislative requirement of the new Social Care and Well-being (Wales) Act 2014. The guidance to the Safeguarding element of the Act was late in being issued and this didn't support the implementation of the new duties of Local Authorities to make enquires. The Act has brought significant changes to how enquiries are managed and staff are embracing the challenge at all levels.

The aim is to enhance the skills of our front end services to ensure that all enquiries are managed consistently and proportionately.

We are working on ensuring our processes are in line with current guidance and able to report the required data to the Welsh Government.

Going forward what we need to report on will change as will the requirements of our duty to make enquiries.

(Regional) Safeguarding Boards

1) Mid and West Wales Safeguarding Children's Board – CYSUR

The regional safeguarding arrangements (CYSUR) have now been in place since June 2014. A review of CYSUR has been recently undertaken, with the outcome being that the Strategic Group will no longer continue to meet. The four Heads of Service (Powys, Carmarthen, Ceredigion and Pembrokeshire) are all members of the Executive Board, which continues to meet on a quarterly basis. The Head of Service will ensure that any actions arising on a local or regional basis will be addressed accordingly.

There is a Child Practice Review subgroup which meets a minimum of quarterly to consider any child practice reviews which have been undertaken and ensure that the actions learning from these are disseminated throughout the Local Authorities via the Local Operational Group.

The role of the CYSUR Manager has been extended with the remit also including the establishing of an Adults Regional Safeguarding Board. A new Manager has been recently appointed and she commenced her role on 6th June 2016.

Powys Local Operational Group

The Powys Local Operational Group continues to meet on a quarterly basis and is chaired by the Head of Children's Services. A number of sub groups are also in place to consider safeguarding training, case and thematic audits. A Safe, Secure, and Stable group is also in place which considers arrangements for children who are placed in Powys by other Local Authorities. This group is currently undertaking a piece of work in conjunction with CCSIW in order to address some of the challenges that are faced in Powys in respect of the disproportionate number of independent residential childrens homes in the area. Members will be receive the outcome of this in the future quarterly updates.

2) Mid and West Wales Safeguarding Adult's Board- Regional Safeguarding Board

The Regional Safeguarding Board for Adults has had its first meeting and the local safeguarding group has been re defined in order to meet new legislative requirements.

Powys Local Operational Group- Adults

The new group is Powys Local Safeguarding Groups Adults and is streamlined to form closer working links with its sister group representing Childrens Services. Moving forward both the PLOG and PLOGA will meet on the same day with a transitional session between meetings to address cross cutting issues. This will mirror the regional arrangements.

The Safeguarding Managers of Adults and Childrens Services recently undertook safeguarding development with members. This session covered Part 7 (Safeguarding) of the Social Services and Well-being (Wales) Act 2014, and an update on the challenges that are faced in respect of legal/illegal highs. Both of the sessions were well received. A further development session is planned for September

Update of Safeguarding case work:

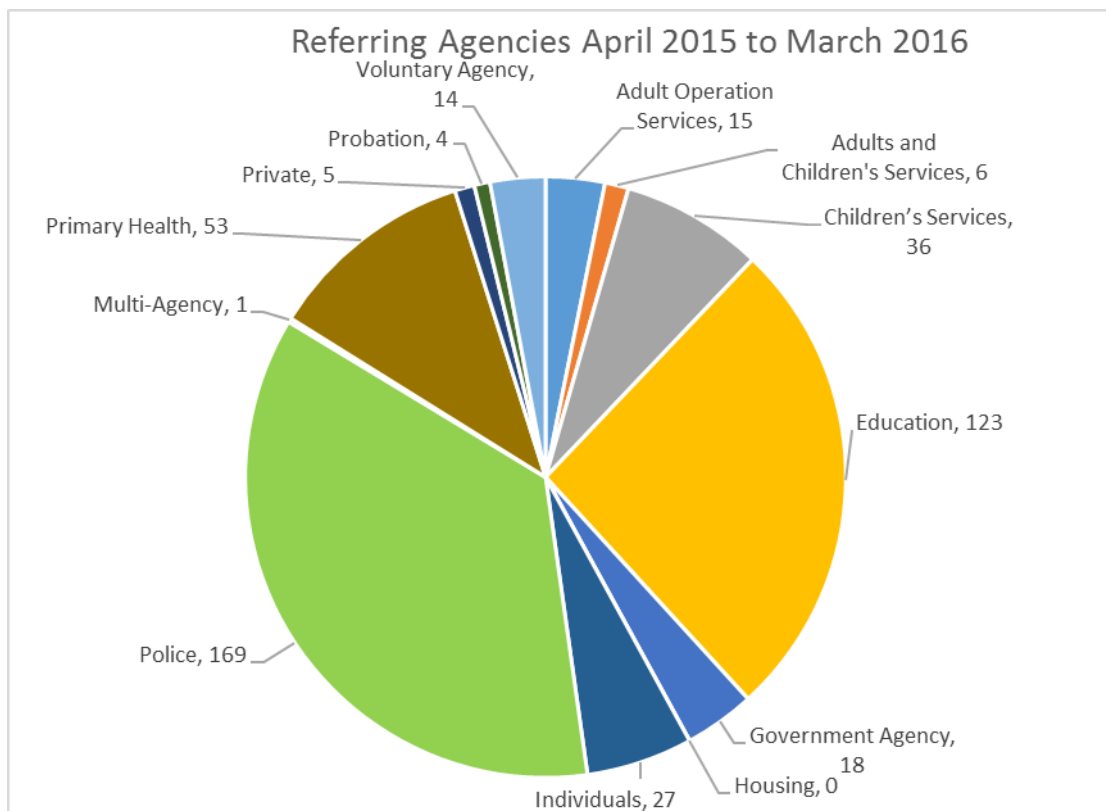
1) Safeguarding Children

Figure 1: Child Protection referrals as a proportion of all contacts with Children’s services

| | Q1 15/16 | Q2 15/16 | Q3 15/16 | Q4 15/16 | Grand Total |
|-------------------------------|--------------|--------------|--------------|--------------|--------------|
| Other Referrals | 646 | 591 | 541 | 482 | 2260 |
| CP Referrals | 128 | 69 | 97 | 115 | 409 |
| CP as % of All Contact | 16.5% | 10.5% | 15.2% | 19.3% | 15.4% |

Child protection referrals received are 19.3% of the overall contact with the department. This is an increase over the last quarters, with no one factor evident for the increase. The figure relates to 115 children, 7 of which relate to likely or actual abuse and 92 suspected of abuse which have required further investigation. The remaining 16 relate to family support in safeguarding matters.

Figure 2 : Child Protection referrals by agency – year to date



Annual figures indicate that Police are the highest referring agency, followed by Education and Health.

Figure 3 - Initial Child Protection Conferences held by quarter

| | Q1 15/16 | Q2 15/16 | Q3 15/16 | Q4 15/16 | Grand Total | Rate per pop.* |
|--------------------|-----------|-----------|-----------|-----------|-------------|----------------|
| Grand Total | 37 | 32 | 49 | 48 | 166 | 6.4 |

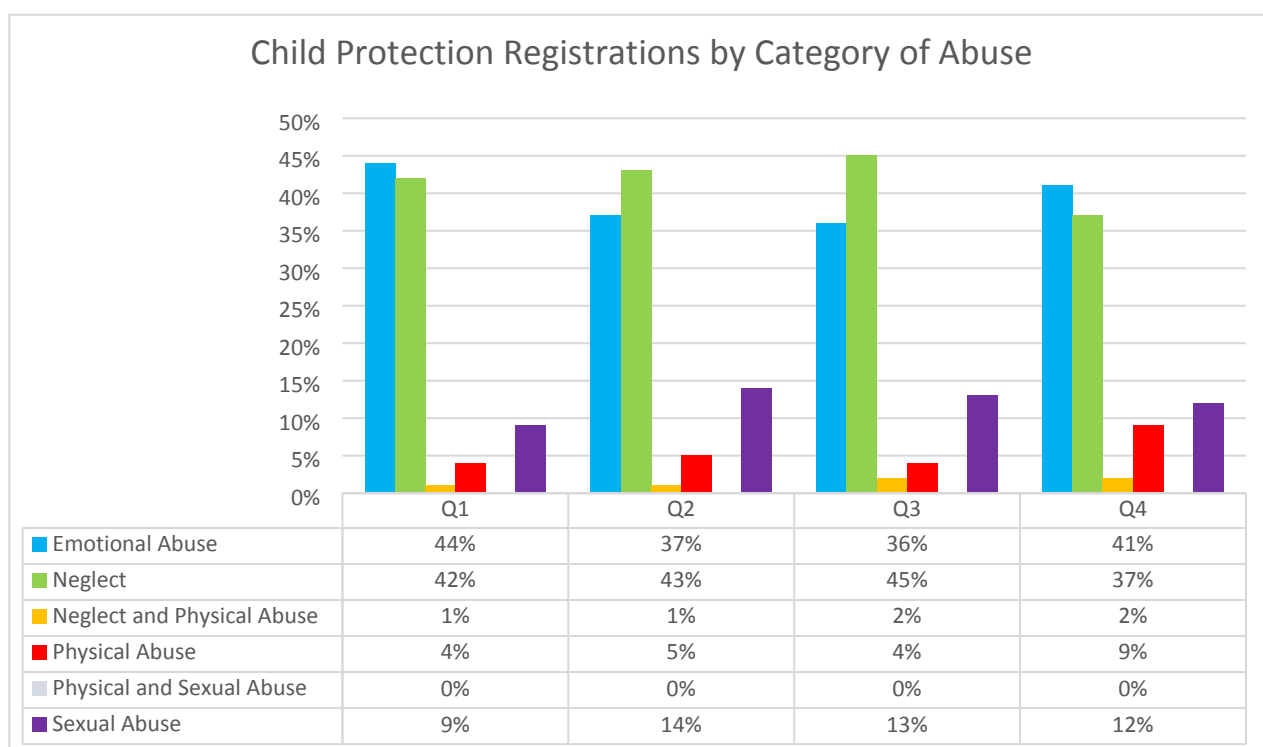
In respect of the number of Initial Child Protection Case Conferences held, we have seen an increase over the last 2 quarters. One factor that is affecting this is around a number of families in which there are larger sibling groups.

Figure 4 – Review Child protection Conferences held by quarter

| | Q1 15/16 | Q2 15/16 | Q3 15/16 | Q4 15/16 | Grand Total | Rate per pop.* |
|--------------------|------------|-----------|-----------|-----------|-------------|----------------|
| Grand Total | 108 | 63 | 61 | 79 | 311 | 12.1 |

Review Child Protection Conferences are held no later than 3 months after an Initial Child Protection, with subsequent meetings held with 6 months after the first review.

Figure 5 - Child Protection Registrations by Category of Abuse



Following the implementation of the Social Services and Well-being (Wales) Act 2014, further categories of abuse are to be included in the future. Work is currently being undertaken to include the new categories on the database.

Figure 6 – Factors that affect parent’s ability to safeguard children

| Factors Affecting Parental Ability to Care Adequately for Children | Q1 15/16 | Q2 15/16 | Q3 15/16 | Q4 15/16 | Grand Total |
|---|-----------------|-----------------|-----------------|-----------------|--------------------|
| Domestic Abuse | 15% | 64% | 27% | 33% | 44% |
| Mental Health | - | 28% | 17% | 22% | 24% |
| Substance Misuse | 20% | 8% | 13% | 11% | 17% |
| Alcohol Misuse | 50% | 16% | 15% | 13% | 25% |
| Contact with Risky Adult | 5% | 16% | - | 22% | 12% |
| Learning Disabilities | - | - | 3% | 9% | 5% |
| YP Substance/Alcohol Misuse | - | - | - | - | 0% |
| Long Term Neglect | - | - | 6% | 7% | 6% |
| At Risk of CSE | - | - | 4% | 13% | 7% |
| Other | 10% | 24% | 15% | 18% | 22% |

We continue to see high numbers in respect of domestic abuse, although this is not at the level that was evident in Q2. This quarter has seen a sharp increase in children where there is contact with a risky adult. This is currently being explored further in order to have a clear analysis of the issue.

For a number of families there may be more than 1 factor that affects parents ability to safeguard their children – please see table below :-

| Factors Affecting Parental Ability to Care Adequately for Children | Q1 15/16 | Q2 15/16 | Q3 15/16 | Q4 15/16 |
|---|-----------------|-----------------|-----------------|-----------------|
| 1 Factor | 10 | 9 | 10 | 9 |
| 2 Factors | 4 | 12 | 17 | 6 |
| 3 Factors | - | 2 | 8 | 2 |
| 4 Factors | - | - | 2 | - |

2) Safeguarding Adults

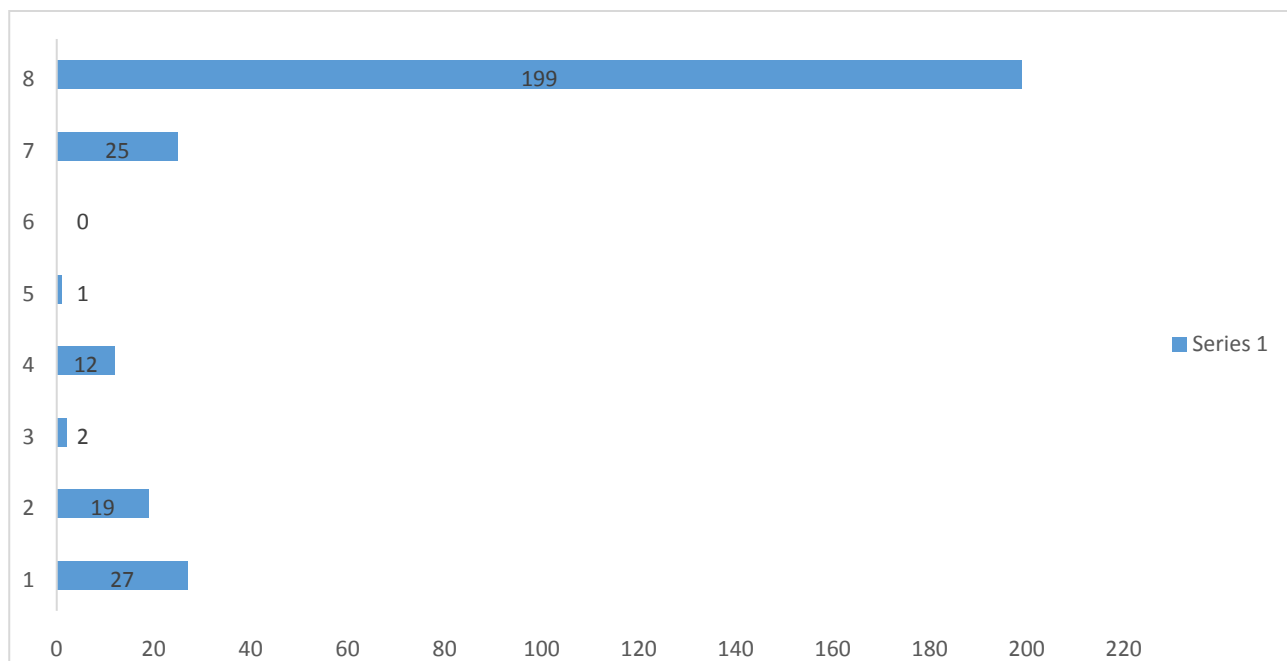
What have we done?

Referrals received

The following table details the number of referrals that were received during Quarter Four across the County. The Population for each shire has also been included and used as a basis to establish the rate of Adult Protection referrals per 1000 population.

| | Montgomeryshire | | Radnorshire (Llandrindod) | | Brecknockshire (Brecon / Ystrad) | | Powys Total | |
|---|-----------------|------------|------------------------------|-----------|-------------------------------------|------------|-------------|------------|
| | | Q4 | | Q4 | | Q4 | | Q4 |
| Inappropriate Referral – No Further Action | | 7 | | 9 | | 8 | | 24 |
| Inappropriate Referral – Action Required (an example of action would be where we complete a concern with provider form to ensure we capture the concern and this can then feed into the monitoring process but overall the enquiry is not appropriate for investigation) | | 14 | | 8 | | 19 | | 41 |
| Appropriate Referral – No Strategy Meeting (An example of this categorisation would be where the issues and associated risks if any are resolved at the discussion stage or is concluded the proportionate and appropriate course of action might be a Care Plan review of services.) | | 15 | | 13 | | 16 | | 44 |
| Appropriate Referral – Strategy Meeting | | 68 | | 59 | | 77 | | 204 |
| Referred to DLM for Decision | | 1 | | 1 | | - | | 2 |
| Threshold Not Recorded | | - | | - | | - | | - |
| Total | | 105 | | 90 | | 120 | | 315 |
| Population | 50,655 | | 26,064 | | 29,901 | | 106,620 | |

Location of Alleged Abuse Quarter 4.



1. Residential care
2. Nursing Home
3. Independent Hospital
4. NHS Hospital
5. Day Care
6. Education setting
7. Supported Tenancy
8. Own Home

How well we are doing?

Allegation Status

| | Montgomeryshire | | Radnorshire | | Brecknockshire | | Powys Total | |
|------------------------------------|-----------------|------------|-------------|-----------|----------------|-----------|-------------|------------|
| | 14/15 Year | Q4 | 14/15 | Q4 | 14/15 | Q4 | 14/15 Year | Q4 |
| Admitted | 4 | 7 | 2 | 3 | 7 | 5 | 13 | 15 |
| Proved | 12 | 125 | 5 | 3 | 1 | 6 | 18 | 134 |
| Likely on balance of probability | 10 | 17 | 12 | 6 | 15 | 11 | 37 | 34 |
| Unlikely on balance of probability | 7 | 13 | 2 | 3 | 9 | 5 | 18 | 21 |
| Disproved | 5 | 15 | 8 | 1 | 7 | 2 | 20 | 18 |
| Allegation withdrawn | 6 | 2 | 3 | 0 | 1 | 0 | 10 | 2 |
| Inconclusive | 15 | 16 | 11 | 4 | 29 | 11 | 55 | 31 |
| Not Recorded | 24 | 22 | 64 | 74 | 28 | 40 | 116 | 136 |
| Total | 83 | 217 | 107 | 94 | 97 | 80 | 287 | 391 |

The above table shows the result of referrals that have been completed during the reporting period. This is recorded on Draig for all referrals at point of closure.

The data for this report was collated at the beginning of work completed to complete missing data noted on Enquiry closures. Parts of the county have seen a regular turnover of staff and which has contributed to incomplete data entry. A new system of quality assurance has been introduced to address largely due to temporary staff not being au fait with the processes involved.

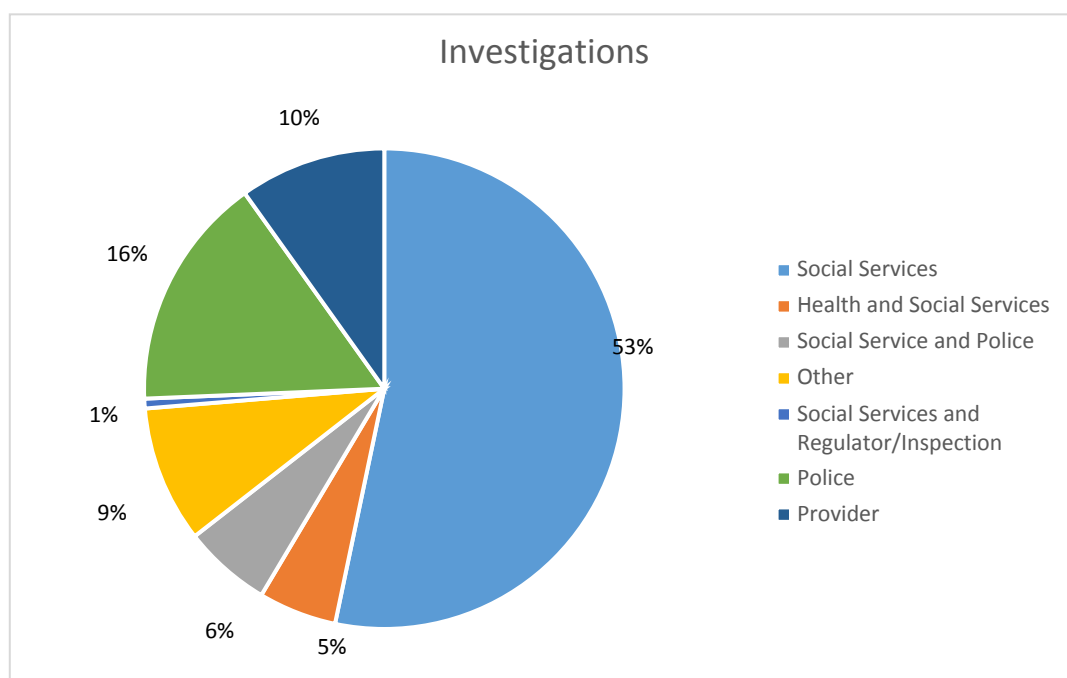
To mitigate against this in future the Safeguarding Manager will ensure guidelines are written and disseminated to ensure staff can easily find guidance required to successfully close down enquiries ensuring we will be data compliant in the future.

Ongoing training in local processes will be embedded into practice via supervision and training sessions along with the input of a newly formed quality assurance panel.

Investigation

The first table below identifies the number of cases that go on to be investigated, based on the "Type of Investigator" field in Draig.

| | Montgomeryshire | | Radnorshire | | Brecknockshire | | Powys Total | |
|--------------------------------------|-----------------|---------------|-------------|---------------|----------------|---------------|-------------|----------------|
| | 14/15 Year | Q4 | 14/15 Year | Q4 | 14/15 Year | Q4 | 14/15 Year | Q4 |
| Number of referrals investigated | 35 | 189 | 26 | 15 | 24 | 33 | 85 | 240 |
| Percentage of referrals investigated | 79.5% | 88.73% | 38.2% | 17.24% | 30.4% | 38.37% | 44.5% | 62.18 % |



The graph shows the diversity of enquiries and investigation leads. The decision about who is the most appropriate to investigate is made at the Strategy Meeting. Investigators are placed within area teams. Going forward this pattern will change reflecting the change

in legislation. The figures within the table for Montgomeryshire reflects a number of open enquiries relating to domiciliary care closed in this quarter.

Alleged Victim Outcomes

The table on the following page shows the outcomes recorded for all referrals completed during the reporting period.

| | Montgomeryshire | | Radnorshire | | Brecknockshire | | Powys Total | |
|--|-----------------|-----|-------------|----|----------------|----|-------------|-----|
| | 14/15 Year | Q4 | 14/15 Year | Q4 | 14/15 Year | Q4 | 14/15 Year | Q4 |
| Actions refused by alleged victim | 0 | 3 | 3 | 1 | 0 | 0 | 3 | 4 |
| Adult Protection Plan / Care Plan | 13 | 129 | 14 | 9 | 12 | 6 | 39 | 144 |
| Alleged Victim changed accommodation | 0 | 3 | 2 | 0 | 6 | 1 | 8 | 4 |
| Increased monitoring by care manager | 27 | 98 | 4 | 5 | 18 | 14 | 49 | 117 |
| No Action | 3 | 3 | 1 | 3 | 19 | 11 | 23 | 17 |
| Not applicable - no abuse found | 2 | 10 | 0 | 1 | 14 | 3 | 16 | 14 |
| Other - please specify | 5 | 95 | 10 | 4 | 16 | 10 | 31 | 109 |
| Other Additional Services | 1 | 15 | 3 | 5 | 2 | 3 | 6 | 23 |
| Preparation for Court | 1 | 0 | 0 | 0 | 0 | 1 | 0 | 1 |
| Provider Support | 0 | 3 | 2 | 0 | 1 | 1 | 3 | 4 |
| Referral for Advocate | 0 | 0 | 1 | 0 | 0 | 1 | 1 | 1 |
| Referral for IMCA | 0 | 0 | 0 | 0 | 1 | 0 | 1 | 0 |
| Referred for counselling | 0 | 0 | 0 | 0 | 0 | 0 | 0 | 0 |
| Referred to Victim Support | 0 | 0 | 0 | 0 | 0 | 0 | 0 | 0 |
| Risk Removed | 13 | 142 | 29 | 51 | 38 | 18 | 80 | 211 |
| Risks reduced/improved safeguards to client/property | 36 | 53 | 46 | 47 | 38 | 52 | 120 | 152 |

Powys One plan

Options Considered/Available

Not applicable.

Preferred Choice and Reasons

Not applicable.

Sustainability and Environmental Issues/Equalities/Crime and Disorder,/Welsh Language/Other Policies etc

The Regional and Local safeguarding arrangements positively promote the equality and linguistic needs of children and adults wherever possible.

Children and Young People's Impact Statement - Safeguarding and Wellbeing

The update keeps members informed of relevant safeguarding matters.

Local Member(s)

Not applicable.

Other Front Line Services

The Powys Local Safeguarding Group engages with frontline staff/services through its child protection fora. Both the PLOG and APC have active training programmes co-ordinated by the local authority and attended by staff from all agencies. The Safeguarding team give advice and information to managers and staff working with children and adults at risk from all sectors.

Support Services (Legal, Finance, Corporate Property, HR, ICT, BPU)

Legal:

Legal Services continue to support Front Line Services and note the content of the report. It is noted that the Social Services and Well-being Act 2014, created a duty on all local authority staff, members and relevant partners to report any actual or suspected incidents of abuse or harm.

Senior Social Care Lawyer – South

Finance:

The Finance Business Partner notes the content of the report regarding safeguarding matters.

HR: The HR Business Partner notes the content of the report regarding safeguarding matters.

ICT:

The report is noted by ICT.

Business Support:

The Business Support Unit is committed to providing support to Adult and Children's Safeguarding within Powys and is integral to future developments and requirements.

Property:

This report does not appear to impact on Corporate Property.

Local Service Board/Partnerships/Stakeholders etc

There are reports which will be available for consideration by the Local Service Board.

Corporate Communications

No proactive communication action required.

Statutory Officers

The Strategic Director Resources (S151 Officer) notes the comments made by finance.

The Solicitor to the Council (Monitoring Officer) has commented as follows: “I note the legal comment and have nothing to add to the report.

Members’ Interests

The Monitoring Officer is not aware of any specific interests that may arise in relation to this report. If Members have an interest they should declare it at the start of the meeting and complete the relevant notification form.

| | |
|---|--|
| Recommendation: | Reason for Recommendation: |
| That Cabinet accepts the safeguarding update in line with its safeguarding responsibilities. | Safeguarding is everyone’s business and this report provides assurance to Cabinet of work that is underway both locally and regionally on important safeguarding matters. |

| | |
|-------------------------------|----------|
| Relevant Policy (ies): | |
| Within Policy: | Y |
| Within Budget: | Y |

| | |
|----------------------------------|------------|
| Relevant Local Member(s): | All |
|----------------------------------|------------|

| | |
|---|------------------------|
| Person(s) To Implement Decision: | Agency representatives |
| Date By When Decision To Be Implemented: | N/A |

| | | | |
|---|-------------|-------------|--|
| Contact Officer Name: | Tel: | Fax: | Email: |
| Sue Morgan Safeguarding Lead for Children, Young People | | | sue.morgan@powys.gov.uk |
| Karen Arthur – Safeguarding Lead for Vulnerable Adults | | | karen.arthur@powys.gov.uk |